

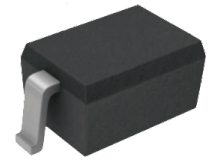
FEATURES

- | Fast Switching Device (TRR <4.0 nS)

- | Power Dissipation of 380mW

- | High Stability and High Reliability

- | Low reverse leakage



SOD-123

MECHANICAL DATA

- | SOD-123 Small Outline Plastic Package

- | Polarity: Color band denotes cathode end

- | Mounting Position: Any

APPROVALS

RoHS	Compliance with 2011/65/EU
HF	Compliance with IEC61249-2-21:2003

MAXIMUM RATINGS (T_A=25°C)

Parameter	Symbol	Value	Unit
Reverse Voltage	V _R	80	V
Peak Reverse Voltage	V _{RM}	100	V
Power Dissipation	P _D	380	mW
Average Rectified Current	I _O	215	mA
Working Inverse Voltage	W _{IV}	75	V
Non-repetitive Peak Forward Current	I _{FM}	500	mA
Peak Forward Surge Current @tp=1us; T _A =25°C	I _{FSM}	2.0	A
Thermal resistance from junction to ambient	R _{th(j-a)}	330	K/W
Thermal resistance from junction to solder point	R _{th(j-sp)}	70	K/W
Operating junction temperature	T _J	150	°C
Storage temperature range	T _{STG}	-55 to 150	°C

ELECTRICAL CHARACTERISTICS ($T_A=25^\circ\text{C}$)

Parameter	Test Condition	Symbol	Min.	Max.	Unit
Reverse Voltage	$I_R = 100\mu\text{A}$	B_V	100		V
	$I_R = 5\mu\text{A}$		80		V
Reverse Leakage Current	$V_R = 25\text{V}$	I_R		30	nA
	$V_R = 80\text{V}$			0.5	μA
Forward Voltage	$I_F = 150\text{mA}$	V_F		1.25	V
	$I_F = 50\text{mA}$			1.00	V
	$I_F = 10\text{mA}$			0.855	V
	$I_F = 1.0\text{mA}$			0.715	V
Reverse Recovery Time	$I_F = 10\text{mA}, I_R = 10\text{mA}$ $R_L = 100\Omega, I_{RR} = 1\text{mA}$	T_{RR}		4	nS
Capacitance	$V_R = 0\text{V}, f = 1\text{MHz}$	C_T		1.5	pF

CHARACTERISTIC CURVES

Fig 1. Forward current as a function of forward voltage; typical values

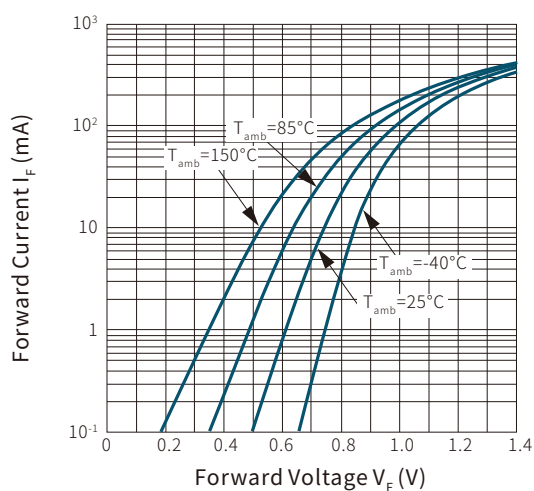


Fig 2. Non-repetitive peak forward current as a function of pulse duration; maximum values

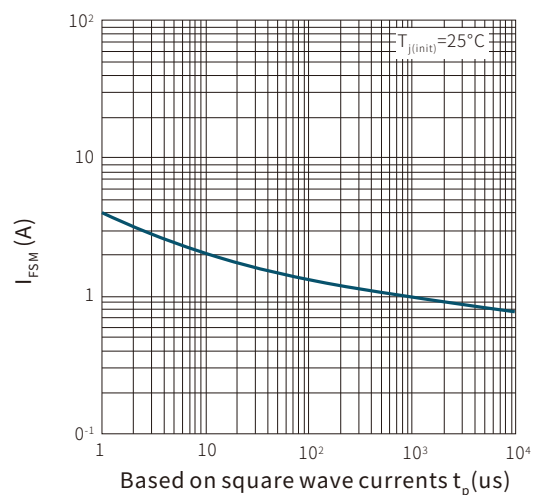


Fig 3. Reverse current as a function of reverse voltage ; typical values

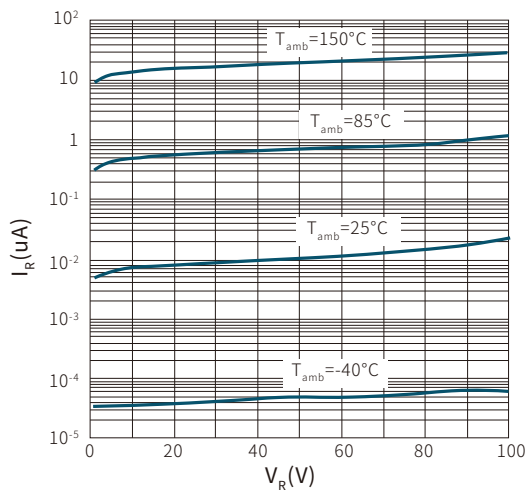
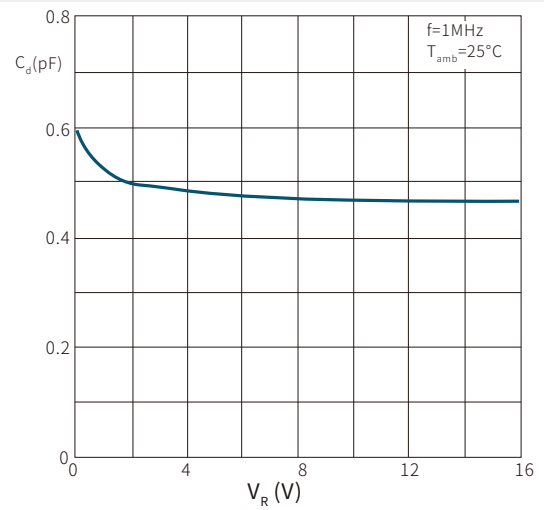
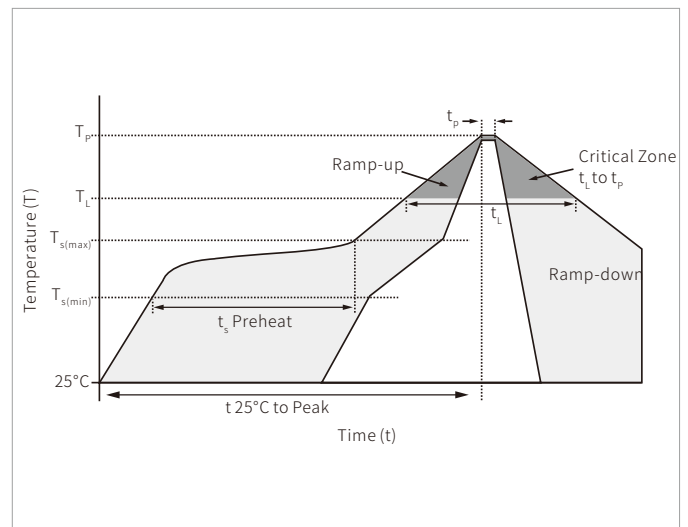


Fig 4. Diode capacitance as a function of reverse voltage ; typical values

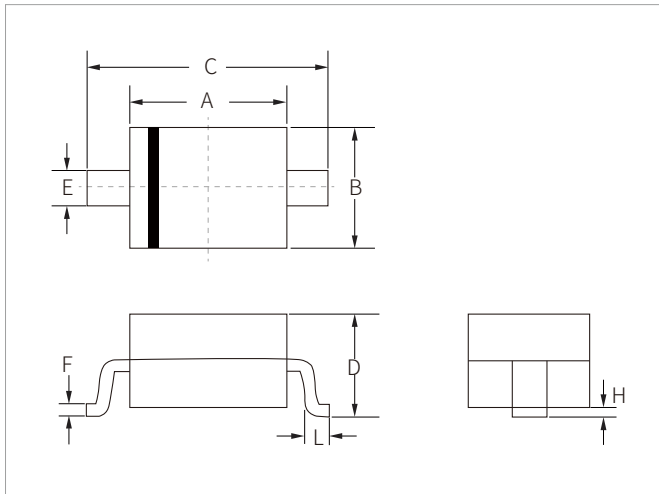


SOLDERING PARAMETERS

Reflow Condition		Lead-free assembly
Pre Heat	Temperature Max ($T_{s(min)}$)	150°C
	Temperature Max ($T_{s(max)}$)	200°C
	Time (min to max) (t_s)	60 – 180 secs
Average ramp up rate (Liquidus Temp (T_L) to peak)		3°C/second max
$T_{s(max)}$ to T_L - Ramp-up Rate		3°C/second max
Reflow	Temperature (T_L) (Liquidus)	217°C
	Time (min to max) (t_L)	60 – 150 seconds
Peak Temperature (T_p)		260°C
Time within 5°C of actual peak Temperature (t_p)		20 – 40 seconds
Ramp-down Rate		6°C/second max
Time 25°C to peak Temperature (T_p)		8 minutes max.
Do not exceed		260°C

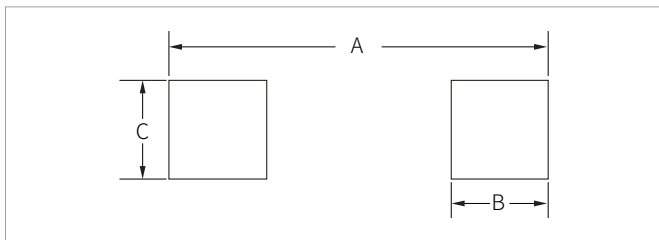


SOD-123 PACKAGE INFORMATION



Ref.	Millimeters		Inches	
	Min.	Max.	Min.	Max.
A	2.60	2.80	0.102	0.110
B	1.50	1.70	0.059	0.067
C	3.55	3.85	0.140	0.152
D	1.05	1.25	0.041	0.049
E	0.45	0.65	0.018	0.026
F	0.80	0.15	0.003	0.006
H	-	0.10	-	0.004
L	0.25	0.45	0.010	0.018

RECOMMENDED PAD LAYOUT DIMENSIONS



Ref.	Millimeters		Inches	
	Min.	Max.	Min.	Max.
A	3.85	4.05	0.152	0.159
B	0.75	0.85	0.030	0.033
C	0.95	1.05	0.037	0.041

ORDERING INFORMATION

Part Number	Marking	Component Package	QTY/Reel	Reel Size
BAS16H	A1	SOD-123	3000PCS	7"

To find your local partner within Semiwell 's website : www.semiwell.com

© 2023 Semiwell Microelectronics Co.,Ltd.

The content of this document has been carefully checked and understood. However, neither Semiwell nor its subsidiaries assume any liability whatsoever for any errors or inaccuracies of this document and the consequences thereof. Published specifications are subject to change without notice. Product suitability for any area of application must ultimately be determined by the customer. In all cases, products must never be operated outside their published specifications. Semiwell does not guarantee the availability of all published products. This disclaimer shall be governed by substantive Chinese law and resulting disputes shall be settled by the courts at the place of business of Semiwell. Latest publications and a complete disclaimer can be downloaded from the Semiwell website. All trademarks recognized.